



Christmas Chess Camp in Hong Kong Int'l School December 2017



This **Christmas**, **Sharpen** Your Mind, **Learn** Powerful Strategy and Tactics, **Enjoy** the Game.

Brilliant Sacrifice, Deadly Mating Combinations, Skewer, Fork, Lightning Chess, Simultaneous Chess, Blindfold Chess, Transfer Chess. Come and have LOADS and LOADS of FUN.

Location: 511 Cafeteria, HKIS Middle School, 1 Red Hill Road, Tai Tam, HK

Date: December 27, 28, 29.

Time: 10:30 am to 1:00 pm (Open to all including non-HKIS students).

Suitability: Beginner to advanced.

Fee: \$900

Equipment: Chess set: \$80, Chess clock: \$100 (All optional, only if you wish to buy one)

Sign-up Register online: www.hoyinpingchess.com,
click Chess Camp Details.

Payment By **E-cheque** - please make E-cheque to "Ho Yin Ping" and send it by email to hoyinpingchess@gmail.com; **or** By **Cheque** - please make cross cheque and hand it to Ms. Ho Yin Ping on the first day.

Contact: Ms. HO Yin Ping

FIDE Chess Master

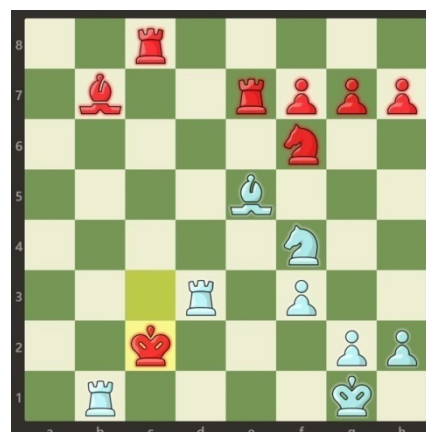
FIDE Chess Instructor

(FIDE=World Chess Federation)

Phone: 9215 2682

Email: hoyinpingchess@gmail.com

Website: www.hoyinpingchess.com



White to move: Mate in 2

Anatoly Karpov vs Tal Mikhail

Ex World Champion

Answer: 1, Rb2 Kc1 2, Ne2#

