



## Chess Lessons in Bradbury School 3<sup>rd</sup> Term 2017-2018

**Learn** Successful Thinking Habits of Champions, **Develop** Winning Habits of your own, **Hone** your skills, **Win** the Chess War.



**Exercise the mind and unleash its potential.**

**Location:** Room 301, 3/F, , 43C Stubbs Road, HK  
**Date:** Friday, 10 Sessions, **April:** 20, 27 **May:** 4, 11, 18, 25 **June:** 1, 8, 15, 22  
**Time:** 3:00 pm – 4:30 pm  
**Class:** Y1 – Y6, Y7 – Y9 (Subject to minimum of 15 students)  
**Fee:** \$1800 (Note: Full fee is charged irrespective of how many lessons one may have missed.)  
**Equipment:** Chess set: \$80, Chess clock: \$100 (All optional, only if you wish to buy one)

### Important:

- 1, The chess teacher, Ms. HO Yin Ping will meet all the chess students at 2:45 pm at the ground covered playground.
- 2, Parent and helper come on time at 4:30 pm to pick-up your child at the covered playground, for safety reasons.

### HO Yin Ping - Introduction

I did on several occasions take young chess players to Children Chess Olympiad. Thousands of students at international primary schools have benefitted from my 21 years of teaching success. Most of them played for school chess team. Several became junior champions in Hong Kong. I also represented Hong Kong in World Women Chess Championships (Asian Zone) and World Chess Olympiads from 1984 to 2005. In the past 20 years, I developed junior chess in HK. I am Chief Organizer of HK Junior Championship, HK Inter-School Championship.

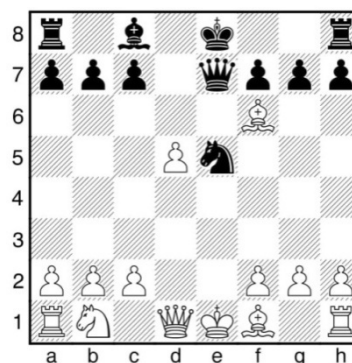
### Tournament opportunity

Student can participate in local tournament organised by Hong Kong Juniors Chess Club. Ms HO is the Chairman and Tournament Director of the Hong Kong Juniors Chess Club ([www.hkjuniorchess.org](http://www.hkjuniorchess.org)), who organizes 3 junior events annually. Students who wish to participate in those international events may also seek advice from her.

**Sign-up** Register online: [www.hoyinpingchess.com](http://www.hoyinpingchess.com), click Chess Lesson Details.

**Payment** By **E-cheque** - please make E-cheque to "Ho Yin Ping" and send it by email to [hoyinpingchess@gmail.com](mailto:hoyinpingchess@gmail.com); **or** By **Cheque** - please make cross cheque payable to "Ho Yin Ping" and send it to 1A, Block 3, Grand Garden, 61 South Bay Road, HK.

**Contact: Ms. HO Yin Ping**  
**FIDE Chess Master**  
**FIDE Chess Instructor**  
**(FIDE=World Chess Federation)**  
**Phone: 9215 2682**  
**Email: [hoyinpingchess@gmail.com](mailto:hoyinpingchess@gmail.com)**  
**Website: [www.hoyinpingchess.com](http://www.hoyinpingchess.com)**



Black to play  
mate in 1

Solution: Nf3#  
Double Check !