



Chess Lessons in Glenealy School 3rd Term 2017-2018

Learn Successful Thinking Habits of Champions, **Develop** Winning Habits of your own, **Hone** your skills, **Win** the Chess War.



Exercise the mind and unleash its potential.

Location: Room 3, 3/F, Glenealy School, 7 Hornsey Road, Mid-Levels, HK
Date: Tuesday, 8 Sessions, **April:** 17, 24 **May:** 8, 15, 29 **June:** 5, 12, 19
Time: 3:00 pm – 4:30 pm
Class: Y1 – Y6 (Subject to minimum of 15 students)
Fee: \$1440 (Note: Full fee is charged irrespective of how many lessons one may have missed.)
Equipment: Chess set: \$80, Chess clock: \$100 (All optional, only if you wish to buy one)

Important:

- (1) All students are not permitted to enter the classroom until Ms. Ho arrives. The student should wait quietly outside the classroom.
- (2) For safety, parent or helper must be on time to pick-up your child at the central staircase.

HO Yin Ping - Introduction

I did on several occasions take young chess players to Children Chess Olympiad. Thousands of students at international primary schools have benefitted from my 21 years of teaching success. Most of them played for school chess team. Several became junior champions in Hong Kong. I also represented Hong Kong in World Women Chess Championships (Asian Zone) and World Chess Olympiads from 1984 to 2005. In the past 20 years, I developed junior chess in HK. I am Chief Organizer of HK Junior Championship, HK Inter-School Championship.

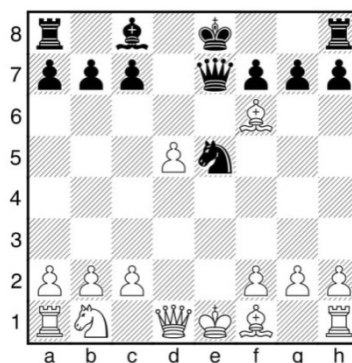
Tournament opportunity

Student can participate in local tournament organised by Hong Kong Juniors Chess Club. Ms HO is the Chairman and Tournament Director of the Hong Kong Juniors Chess Club (www.hkjuniorchess.org), who organizes 3 junior events annually. Students who wish to participate in those international events may also seek advice from her.

Sign-up Register online: www.hoyinpingchess.com, click Chess Lesson Details.

Payment By **E-cheque** - please make E-cheque to "Ho Yin Ping" and send it by email to hoyinpingchess@gmail.com; **or** By **Cheque** - please make cross cheque payable to "Ho Yin Ping" and send it to 1A, Block 3, Grand Garden, 61 South Bay Road, HK.

Contact: Ms. HO Yin Ping
FIDE Chess Master
FIDE Chess Instructor
(FIDE=World Chess Federation)
Phone: 9215 2682
Email: hoyinpingchess@gmail.com
Website: www.hoyinpingchess.com



Black to play
mate in 1

Solution: Nf3#
Double Check
!