



## CHESS Lessons in HKIS

2<sup>st</sup> Term 2017-2018

For G3 – G5 Students



**Learn** Successful Thinking Habits of Champions, **Develop** Winning Habits of your own, **Hone** your skills, **Win** the Chess War.

Chess: 16 Pieces. Unlimited Possibilities.

**Location:** MS 306, HKIS Middle School Campus, 1 Red Hill Road, Tai Tam, HK.

**Date:** Wednesday, 13 Sessions. **Feb:** 28 **Mar:** 7, 14, 21, 28 **April:** 11, 18, 25 **May:** 2, 9, 16, 23, 30

**Time:** Class A: 3:15 pm to 4:15 pm

Class B: 4:20 to 5:20 pm (Open to all including non-HKIS students).

**Class:** Grade 3 – 5 (Subject to minimum of 15 students)

**Fee:** \$1950 (Note: Full fee is charged irrespective of how many lessons one may have missed.)

**Equipment:** Chess set: \$80, Chess clock: \$100 (All optional, only if you wish to buy one)

**Class B students** can join the free “After School Care” to stay in school before the class starts. Please directly apply online on school website.

**Note:** Grade 1 and Grade 2 students who would like to learn chess, please contact Ms. Ho Yin Ping by email to find out about other locations offering classes for these age groups.

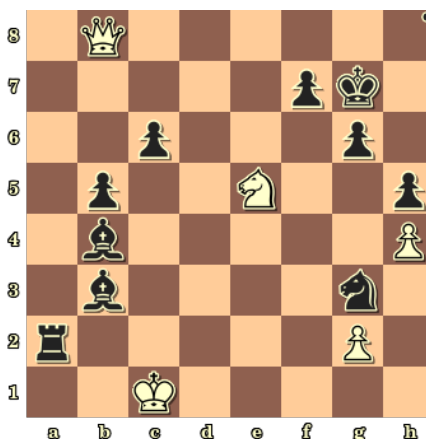


**For safety, parent or helper must be on time to pick-up your child.**

**Sign-up** Register online: [www.hoyinpingchess.com](http://www.hoyinpingchess.com), click Chess Lesson Details.

**Payment** By **E-cheque** - please make E-cheque to "Ho Yin Ping" and send it by email to [hoyinpingchess@gmail.com](mailto:hoyinpingchess@gmail.com); **or** By **Cheque** - please make cross cheque payable to “Ho Yin Ping” and send it to 1A, Block 3, Grand Garden, 61 South Bay Road, HK.

**Contact:** Ms. HO Yin Ping  
**FIDE Chess Master**  
**FIDE Chess Instructor**  
(FIDE=World Chess Federation)  
**Phone:** 9215 2682  
**Email:** [hoyinpingchess@gmail.com](mailto:hoyinpingchess@gmail.com)  
**Website:** [www.hoyinpingchess.com](http://www.hoyinpingchess.com)



**Black to play, Checkmate in 3**  
“The Game of the Century”  
Donald Byrne vs Bobby Fischer (13 Years Old)  
17<sup>th</sup> October 1956

Answer: 1... Ne2+ 2. Kb1 Nc3+  
3. Kc1 Ba3 #



## HO Yin Ping - Introduction

I did on several occasions take young chess players to international tournaments including the Children Chess Olympiad. Thousands of students at international primary schools have benefitted from my 21 years of teaching success. Most of them played for school chess team. Several became junior champions in Hong Kong. I also represented Hong Kong in World Women Chess Championships (Asian Zone) and World Chess Olympiads from 1984 to 2005. In the past 21 years, I developed junior chess in HK. I am the Chief Organizer of HK Junior Championship, HK Inter-School Championship run by the Hong Kong Juniors Chess Club.

### Course suitability

Beginner to tournament player level

### Subject

**Learn** chess rules. **Think** strategy & tactics. **Practice** Opening, Middle-game and Endgame.

**Win** the Chess War.

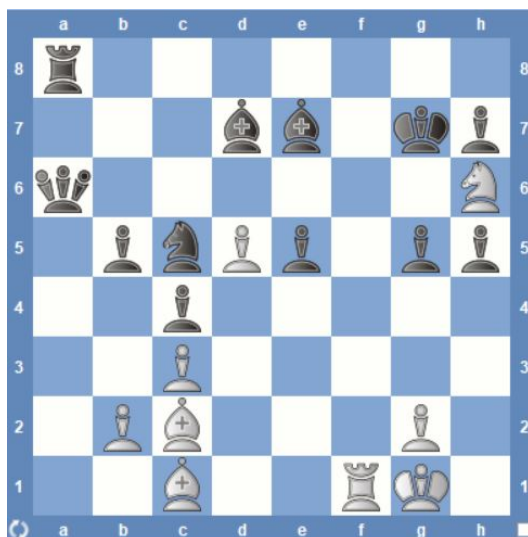
### Course Benefits

1. Resource deployment
2. Concentration power
3. Strategy thinking
4. Analytical power
5. Logical thinking
6. Mental discipline
7. Result focus
8. Sportsmanship
9. EQ coaching.

### Tournament opportunity

Student can participate in local tournament organised by Hong Kong Juniors Chess Club. Ms HO is the Chairman and Tournament Director of the Hong Kong Juniors Chess Club([www.hkjuniorchess.org](http://www.hkjuniorchess.org)), who organizes 3 junior events annually. Students who wish to participate in those international events may also seek advice from her.

## CHESS OLYMPICS



**White to play, mate in 2**

**World Champion Magnus Carlsen Vs Harestad**

**Copenhagen Politiken Cup 2003**

Answer: 1. Rf7+ Kxh6 or Kh8 2. Rxh7#