



## Chess Lessons 2018 – 2019 Term 1 Kennedy school



Like any other part of the human body, the brain needs practice in order to unlock its potential. **Chess Strengthens the Mind.**

Would you like to learn? Details are as follows:

- Location:** Room 120, 2<sup>nd</sup> Floor, North Wing, Kennedy School, 19 Sha Wan Drive, Pok Fu Lam, HK  
**Date:** **Monday**, 12 Sessions, **Sep:** 3, 10, 17, 24, **Oct:** 8, 22, 29, **Nov:** 5, 12, 19, 26, **Dec:** 3  
**Time:** **3:00 pm to 4:30 pm** (For Y1- Y6 students, Open to all including non-Kennedy school students)  
**Suitability:** Players of all levels.  
**Fee:** \$2160  
**Equipment:** Chess set: \$80, Chess clock: \$100 (All optional, only if you wish to buy one)

### Important:

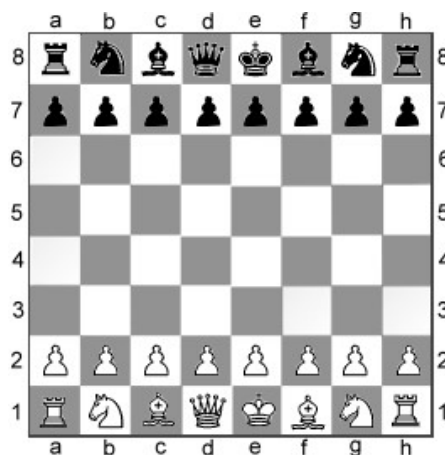
- (1) The chess teacher, Ms. HO Yin Ping will meet all the chess students at 2:45 pm on 4th Floor, North Wing, octagonal playground.
- (2) Parent and helper must come on time to pick-up your child outside of the school office, for safety reasons.

A journey of a thousand miles begins with a single step.

In chess, the first move opens up endless possibilities.

Your move to make.

Sign up **now**.



**Sign-up:** Register online: [www.hoyinpingchess.com](http://www.hoyinpingchess.com), click Chess Lesson Details.

### Payment:

**By E-cheque (conventional cheque is not accepted) - please make E-cheque to "Ho Yin Ping". Or**  
**By bank transfer - please transfer to HSBC account "Ho Yin Ping", account no 041 540790 833.**

Please send your E-cheque or bank transfer receipt by email to Ms. HO Yin Ping at [hoyinpingchess@gmail.com](mailto:hoyinpingchess@gmail.com)

Contact: Ms. HO Yin Ping

FIDE Chess Master & FIDE Chess Instructor (FIDE=World Chess Federation)

Phone: 9215 2682

Email: [hoyinpingchess@gmail.com](mailto:hoyinpingchess@gmail.com)

Website: [www.hoyinpingchess.com](http://www.hoyinpingchess.com)



## HO Yin Ping - Introduction

I did on several occasions take young chess players to international tournaments including the Children Chess Olympiad. Thousands of students at international primary schools have benefitted from my 22 years of teaching success. Most of them played for school chess team. Several became junior champions in Hong Kong. I also represented Hong Kong in World Women Chess Championships (Asian Zone) and World Chess Olympiads from 1984 to 2005. In the past 22 years, I developed junior chess in HK. I am the Chief Organizer of HK Junior Championship, HK Inter-School Championship run by the Hong Kong Juniors Chess Club.

### Course suitability

Beginner to tournament player level

### Subject

**Learn** chess rules. **Think** strategy & tactics. **Practice** Opening, Middle-game and Endgame.

**Win** the Chess War.

### Course Benefits

1. Resource deployment
2. Concentration power
3. Strategy thinking
4. Analytical power
5. Logical thinking
6. Mental discipline
7. Result focus
8. Sportsmanship
9. EQ coaching.

## CHESS OLYMPICS



### Tournament opportunity

Student can participate in local tournament organised by Hong Kong Juniors Chess Club. Ms HO is the Chairman and Tournament Director of the Hong Kong Juniors Chess Club([www.hkjuniorchess.org](http://www.hkjuniorchess.org)), who organizes 3 junior events annually. Students who wish to participate in those international events may also seek advice from her.

**White to play, mate in 2**

**World Champion Magnus Carlsen play white in blindfold chess in 2015**

Answer: 1. Nd5+ Ke8 or Kf8 2. Qxh8 #

