



**HKIS School**  
**Chess Lessons**  
**for G2 students**  
**2019-2020 Term 1**



Mr. CHAU Sau-ming is to conduct this class, who has been teaching chess at primary and middle schools for six years. Mr. Chau is a FIDE Chess Instructor and a strong chess player in HK. He was a skeleton member of the HK team for the World Chess Olympiad, and he ranked number one with the highest international rating for some years in HK before he retired from the HK team in 2006. He did on several occasions accompany and serve as a coach to junior players in some international tournaments. Also, he is a founding member of the HK Juniors Chess Club, and has been serving as a committee member since then, helping the Club to promote chess for the juniors in HK.

Be a Chess Champion. Outrageous Chess Moves. Shock your opponents. Creative attacks. Ingenious defense. Play a brilliant chess game and you have the power to change the world. Impossible becomes possible. Magic. Logic. Suspense. Thriller. Solution for problem. Power up your mind. Play tournaments. Winning is fun. You can do it. Check, check, checkmate.

**Location:** Can, 137B, HK International School, Lower Primary Campus, Repulse Bay

**Date:** Wednesdays, 16 Sessions.

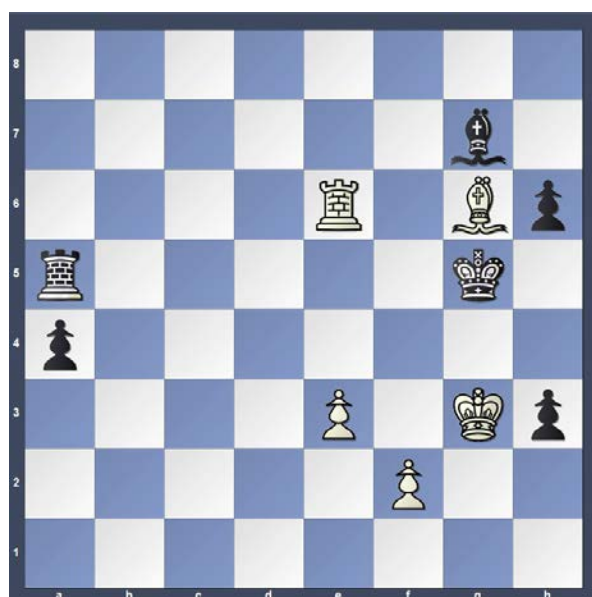
**Sep:** 4, 11, 18, 25, **Oct:** 9, 16, 23, 30, **Nov:** 6, 13, 20, 27, **Dec:** 4, **Jan:** 8, 15, 22

**Time:** 2:50pm - 3:50pm (only for G2 students)

**Suitability:** Players of all levels.

**Fee:** \$2400 (Note: Full fee is charged irrespective of how many lessons one may have missed.)

**Equipment:** Chess set: \$100, Chess clock: \$100 (All optional, only if you wish to buy one)



**World Champion Magnus Carlsen vs Alexei Shirov (12-6- 2008)**

**White to move, mate in 1.**

**Answer: 1. f4 #**

**Sign-up:** Register online: [www.hoyinpingchess.com](http://www.hoyinpingchess.com), click Chess Lesson Details.

**Payment:** By E-cheque (conventional cheque is not accepted) - please make E-cheque to "Ho Yin Ping". **Or** By bank transfer - please transfer to HSBC account "Ho Yin Ping", account no 041 540790 833.

Please send your E-cheque or bank transfer receipt by email to Ms. HO Yin Ping at [hoyinpingchess@gmail.com](mailto:hoyinpingchess@gmail.com)

**Contact:** Ms. HO Yin Ping

**FIDE Chess Master and FIDE Chess Instructor (FIDE=World Chess Federation)**

**Phone:** 9215 2682

**Email:** [hoyinpingchess@gmail.com](mailto:hoyinpingchess@gmail.com)

**Website:** [www.hoyinpingchess.com](http://www.hoyinpingchess.com)



## HO Yin Ping - Introduction

I took young players to participate in several international tournaments including the Children Chess Olympiad. Thousands of chess students at International Primary Schools benefitted from my 23 years of teaching success. Many of my students represented their school chess team. Several progressed to become HK Junior Champions. Between 1984 - 2005, I represented Hong Kong in World Women Chess Championships (Asian Zone) and World Chess Olympiads. For the past 22 years, I developed HK Junior Chess. I am the Chief Organizer of HK Junior Championship and HK Inter-School Championship run by the Hong Kong Juniors Chess Club.

### Course suitability

Beginner, Intermediate, Advanced, to Open Tournament Levels.

### Course Benefits

1. Resource deployment
2. Concentration power
3. Strategic thinking
4. Analytical power
5. Logical thinking
6. Mental strength
7. Result oriented
8. Sportsmanship
9. EQ coaching

### Tournament opportunities

Student can participate in local tournaments. Ms HO is Chairman and Tournament Director of the Hong Kong Juniors Chess Club ([www.hkjuniorchess.org](http://www.hkjuniorchess.org)), which organizes 3 junior events each year. Students who want to play in International Tournaments, may ask her for advice.

## CHESS OLYMPICS



**2016 blindfold chess game by world champion Magnus Carlsen. White to move. Mate in 2.**

**Answer: 1. c7+ Kb7 or a7 or a8, 2. c8=Q#**

