



## Bradbury School Chess Lessons 2019-2020 Term 1



Be a Chess Champion. Outrageous Chess Moves. Shock your opponents. Creative attacks. Ingenious defense. Play a brilliant chess game and you have the power to change the world. Impossible becomes possible. Magic. Logic. Suspense. Thriller. Solution for problem. Power up your mind. Play tournaments. Winning is fun. You can do it. Check, check, checkmate.

### Class A (Thursday)

**Location:** Room 202, 2/F, Bradbury School, 43C Stubbs Road, HK.

**Date:** Thursday, 14 Sessions, **Sep:** 5, 12, 19, 26, **Oct:** 3, 17, 24, 31, **Nov:** 7, 14, 21, 28, **Dec:** 5, 12

**Time:** 3:00 pm to 4:30 pm

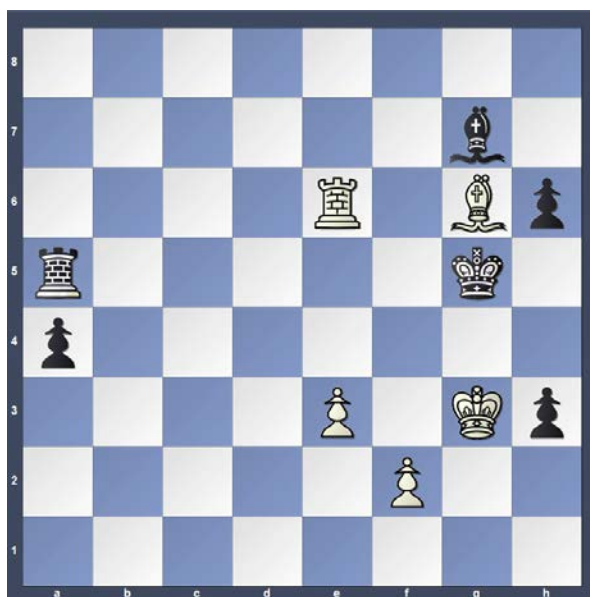
**Suitability:** Players of all levels. For Y1- Y6 students, Open to all including non-Bradbury school students

**Fee:** \$2520 (Note: Full fee is charged irrespective of how many lessons one may have missed.)

**Equipment:** Chess set: \$100, Chess clock: \$100 (All optional, only if you wish to buy one)

### Important:

- 1, The chess teacher, Ms. HO Yin Ping will meet all the chess students at 2:45 pm at the ground covered playground.
- 2, Parent and helper come on time at 4:30 pm to pick-up your child at the covered playground, for safety reasons.



**World Champion Magnus Carlsen vs Alexei Shirov (12-6- 2008)**

**White to move, mate in 1.**

**Answer: 1. f4 #**

**Sign-up:** Register online: [www.hoyinpingchess.com](http://www.hoyinpingchess.com), click Chess Lesson Details.

**Payment:** By E-cheque (conventional cheque is not accepted) - please make E-cheque to "Ho Yin Ping". **Or** By bank transfer - please transfer to HSBC account "Ho Yin Ping", account no 041 540790 833.

Please send your E-cheque or bank transfer receipt by email to Ms. HO Yin Ping at [hoyinpingchess@gmail.com](mailto:hoyinpingchess@gmail.com)

**Contact: Ms. HO Yin Ping**

**FIDE Chess Master and FIDE Chess Instructor (FIDE=World Chess Federation)**

**Phone: 9215 2682**

**Email: [hoyinpingchess@gmail.com](mailto:hoyinpingchess@gmail.com)**

**Website: [www.hoyinpingchess.com](http://www.hoyinpingchess.com)**



## HO Yin Ping - Introduction

I took young players to participate in several international tournaments including the Children Chess Olympiad. Thousands of chess students at International Primary Schools benefitted from my 23 years of teaching success. Many of my students represented their school chess team. Several progressed to become HK Junior Champions. Between 1984 - 2005, I represented Hong Kong in World Women Chess Championships (Asian Zone) and World Chess Olympiads. For the past 22 years, I developed HK Junior Chess. I am the Chief Organizer of HK Junior Championship and HK Inter-School Championship run by the Hong Kong Juniors Chess Club.

### Course suitability

Beginner, Intermediate, Advanced, to Open Tournament Levels.

### Course Benefits

1. Resource deployment
2. Concentration power
3. Strategic thinking
4. Analytical power
5. Logical thinking
6. Mental strength
7. Result oriented
8. Sportsmanship
9. EQ coaching

### Tournament opportunities

Student can participate in local tournaments. Ms HO is Chairman and

Tournament Director of the Hong Kong Juniors Chess Club ([www.hkjuniorchess.org](http://www.hkjuniorchess.org)), which organizes 3 junior events each year. Students who want to play in International Tournaments, may ask her for advice.

## CHESS OLYMPICS



2016 blindfold chess game by world champion Magnus Carlsen. **White to move. Mate in 2.**

**Answer: 1. c7+ Kb7 or a7 or a8, 2. c8=Q#**

