



Glenealy Chess Lessons 2020-2021 Term 1

Every chess master was once a beginner. Outrageous Chess Moves. Unexpected tactics decide who is the winner. Play a beautiful game worthy of a brilliancy prize. Chess is a mind sport, that is played by millions of people worldwide. One doesn't have to play well, it's enough to play better than your opponent.

Location: Room 1, 3/F, Glenealy School, 7 Hornsey Road, Mid-Levels, HK

Date: Saturdays, 7 Sessions. **Oct:** 31 **Nov:** 7, 14, 21, 28 **Dec:** 5, 12

Time: Class A 9:00am – 10:30am

Suitability: Players of all levels (For Y1- Y6 students, Open to all including non-Glenealy school students)

Fee: \$1260 (Note: Full fee is charged irrespective of how many lessons one may miss.)

Equipment: Chess set: \$100, Chess clock: \$100 (All optional, only if you wish to buy one)

Sign-up:

Register online: www.hoyinpingchess.com,
click Chess Lesson Details.

Payment:

By bank transfer - please transfer to HSBC account "Ho Yin Ping", account no. 041 540790 833. (conventional cheque is not accepted)

By FPS, account no. 92152682

Please send your bank transfer receipt by email to Ms. HO Yin Ping at hoyinpingchess@gmail.com

Contact: Ms. HO Yin Ping

FIDE Chess Master and FIDE Chess Instructor (FIDE=World Chess Federation)

Phone: 9215 2682

Email: hoyinpingchess@gmail.com

Website: www.hoyinpingchess.com

White mates in 2 moves

Solution: 1, Qxh6, gxh6, 2, Nf7# checkmate !





HO Yin Ping - Introduction

1. 24 years of experience in teaching thousands of students.
2. Many of her students represented their schools, and went on becoming HK junior champions.
3. Occasionally took players to the Children Chess Olympics.
4. For 24 years, has been developing HK Junior Chess, as the Chief Organizer of HK Junior Championship and HK Inter-School Championship run by the HK Juniors Chess Club.
5. Represented Hong Kong in World Women Chess Championships (Asian Zone) and World Chess Olympiads.
6. A FIDE Master and FIDE Instructor.

Course suitability

Beginner, Intermediate, Advanced, to Open Tournament Levels.

Course Benefits

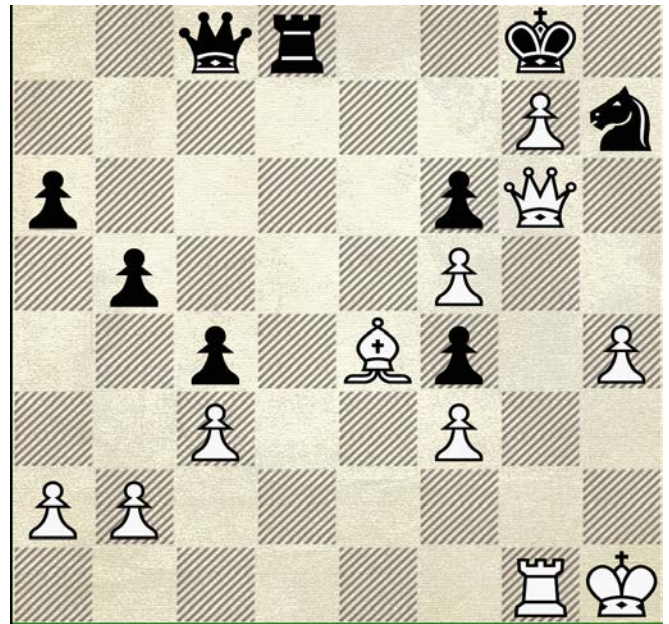
1. Resource deployment
2. Concentration power
3. Strategic thinking
4. Analytical power
5. Logical thinking
6. Mental strength
7. Result oriented
8. Sportsmanship
9. EQ coaching

Tournament opportunities

Student can participate in local tournaments. Ms HO is Chairman and Tournament Director of the Hong Kong Juniors Chess Club (www.hkjuniorchess.org), which organizes 3 junior events each year. Students who want to play in International Tournaments, may ask her for advice.

White mates in two moves

Solution: 1, Qe8, Rxe8, 2, Bd5# Checkmate !



Terms & Conditions

- * Students will not be accepted into the class until the registration fee has been paid.
- * Once you have finalized your registration, fees are immediately due and payable.
- * All fees are non-refundable and no credit offered for withdrawals once students are accepted into the class.
- * We reserve the right to change venue & time without prior notice.
- * Lessons will finish on time. Please pick up your child promptly.
- * No refunds or make up classes will be provided should lessons be canceled because of inclement weather, school closures or other Department of Education / Government directives.
- * No refunds or make up classes are offered should students be unable to attend a scheduled class for any reason.