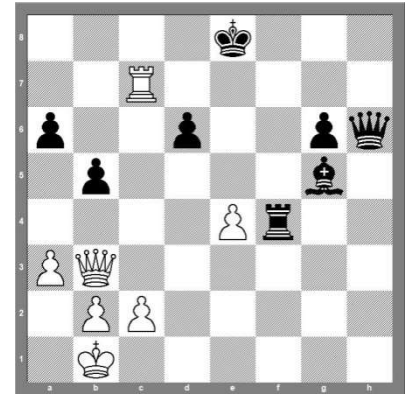




2022-2023 Term 3 Chess Lessons in Glenealy School



White Mates in 3

1 Qe6+ Kf8 2 Qc8+ Bd8 3 Qxd8#

CHECK, CHECK, CHECKMATE.

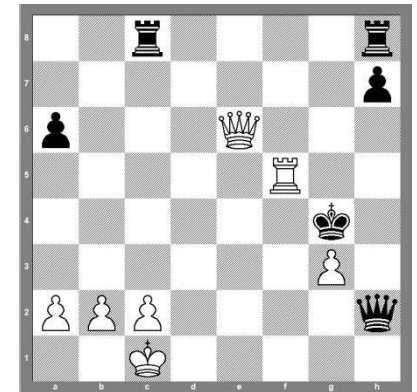
Learn how to defeat your opponents. Chess gods don't exist, opponents are meant to be defeated. Checkmate is calm before the storm.

In an ordinary or boring position, oftentimes victory and defeat happens in the blink of an eye.

Natural instinct helps you to see more than expected. Natural players develop confidence, because we steer them on the right pathway to understanding strategy and tactics, to expect the unexpected. Magic happens on the chessboard. Checkmate seems so easy, but a lot of preparation, dedication, mind development went into it, and makes checkmate seem so easy.

Best of all, we make chess into a fun adventure when rooks take control of the 7th rank and open files, knights hop into enemy territory, bishops attack diagonals, queen gobbles up everything, king advances to attack in the endgame. Pieces dance around the squares, coming alive, to create checkmate.

Chess is more than a mind's game, it takes you into a world of power play. Your time will be well spent, developing your mind. Checkmate is more fun than you can imagine. Join our chess class, register now,,,



White mates in 3

1 Rf4 Kg5 or h5, 2 Qg4 Kh6 3 Rf6#
If 1 Rf4 Kxg3 2 Qg4#

Date: Tuesday, 9 Sessions, Apr:18, 25, May: 2, 9,16, 23, 30,Jun: 6,13

Time: 3:00pm - 4:30pm

Location: Room 4B, 3/F, Glenealy School

Suitability: Players of all levels. For Y1- Y6 students
(Open to all including non-Glenealy school students)

Fee: \$1620 (Note: Full fee is charged irrespective of how many lessons one may missed.)

Equipment: Chess set: \$100, Chess clock: \$100
(All optional, only if you wish to buy one)

Sign-up: Register online: www.hoyinpingchess.com, click Chess Lesson Details.

Payment: By bank transfer - please transfer to HSBC account "HOYINPINGCHESS", account no. 801 571498 838 (conventional cheque is not accepted).

By FPS, account "hoyinpingchess@gmail.com".

Please send your bank transfer receipt by email to Ms. HO Yin Ping at hoyinpingchess@gmail.com

Note: The chess teacher, Ms. HO Yin Ping will meet all the chess students at 2:45 pm at lower Playground. Parent and helper must come on time to pick-up your child at the school gate.

Contact: Ms. HO Yin Ping

FIDE Chess Master and FIDE Chess Instructor(FIDE=World Chess Federation)

Phone: 9215 2682 Email: hoyinpingchess@gmail.com Website:www.hoyinpingchess.com



HO Yin Ping – Introduction

She is a FIDE Chess Master and FIDE Chess Instructor. She also represented Hong Kong in World Women Chess Championships (Asian Zone) and World Chess Olympiads from 1984 to 2005. In the past 20 years, she spent most of her time in developing junior chess in HK. She is also the Chief Organizer of HK Junior Championship, HK Inter-School Championship. In the past 20 years, she occasionally took young chess players to Children Chess Olympiad. Thousands of students at international primary schools benefitted from her 25 years of teaching experience. Most of her students played for school chess team, and several became junior champions in Hong Kong.

Learn: Back Rank Mate, Magnificent 7th Rank, Mate the Fleeing King, Diagonal Mate with Queen and Bishop, Mate with Knight and Queen against the Fianchetto Position. Know the basic chess rules, simple strategy & tactics, Opening, Middle Game and End Game.

Aim of this Chess course is to experience: (1) Out of the box thinking, (2) Creativity, (3) Assess strengths and weakness, opportunities and threats, (4) Concentration depths, (5) Checkmate focus, (6) Sportsmanship as an essential component to develop growing minds, whether a game is won, lost, or draw.

Mind sport: Every chess master was once a beginner. Outrageous chess moves and unexpected tactics decide who is the winner. Try to play a beautiful game worthy of a brilliancy prize. Chess is a mind sport that is played by millions of people worldwide. One doesn't have to play well, it's enough to play better than your opponent.

LESSONS are open to students of all levels including beginners, intermediate, advanced, and students who participate in open tournaments.

Benefits to students: (1) Logical thinking is strengthened. (2) Analyse and visualize in a deeper way. (3) Develop a mind that thinks in terms of strategy and tactics. (4) Speed of thinking is increased. (5) Winning is important but good sportsmanship is vital to character development.

Tournament opportunities

Student can participate in local tournaments. Ms HO is Chairman and Tournament Director of the Hong Kong Juniors Chess Club (www.hkjuniorchess.org), which organizes 3 junior events each year. Students who want to play in International Tournaments, may ask her for advice.

Terms & Conditions

- * Students will not be accepted into the class until the registration fee has been paid.
- * Once you have finalized your registration, fees are immediately due and payable.
- * All fees are non-refundable and no credit offered for withdrawals once students are accepted into the class.
- * We reserve the right to change venue & time without prior notice.
- * Lessons will finish on time. Please pick up your child promptly.
- * No refunds or make up classes will be provided should lessons be canceled because of inclement weather, school closures or other Department of Education / Government directives.
- * No refunds or make up classes are offered should students be unable to attend a scheduled class for any reason.