

White moves 1. Rc8+ Qxc8 2. Qe7 Mates
or 1. Rc8+ Kf7 2. Qf5 mates

Kennedy School Chess Lessons 2025-2026 Term 3

Chess students must dare to use the strategies and tactics of double edged fighting gambits, or use non symmetrical openings and defences to swing the pendulum of initiative towards their advantage. Good sportsmanship breeds respect and strengthens the character required to be a Champion of substance. Chess games are either drawn, won, or lost.

But, what matters most is:

1. Was the player able to teach, think, plan, and analyse for himself in chess and in daily life?
2. Was the player able to recognise the strengths, weaknesses, opportunities, and threats?

Think for yourself. It's the only potent weapon in a player arsenal during chess lessons, training, pre-during-post tournaments, and in daily life.

HO Yin Ping is a FIDE Chess Master and FIDE Chess Instructor.

FIDE = World Chess Federation

She represented Hong Kong in the World Women Chess Championships (Asian Zone) and World Chess Olympiads from 1984 to 2005. In the past 25 years, she spent most of her time in developing junior chess in HK. She is also the Chief Organizer of HK Junior Championship, HK Inter-School Championship. In the past, she occasionally took young chess players to Children Chess Olympiad. Thousands of students at international primary schools benefitted from her over 25 years of teaching experience. Most of her students played for school chess team, and several became junior champions in Hong Kong.

Date: Monday, 9 Sessions, **April: 13, 20, 27, May: 4, 11, 18, June: 1, 8, 15**

Time: 3:00pm–4:30pm

Location: Kennedy School

Suitability: Players of all levels, for Y1-Y6 students (Open to all including non-Kennedy school students)

Fee: \$1980 (Note: full fee is charged irrespective of how many lessons one may miss.)

Equipment: Chess set: \$100 Chess Clock: \$100 (All optional, only if you wish to buy one)

Note:

Chess teacher, Ms. HO Yin Ping will meet all the chess students at 2:45pm at the lower playground near the school reception. Parent and helper come on time at 4:30pm to pick-up your child at the lower playground, for safety reasons.

Sign-up:

Register online: www.hoyinpingchess.com. After the online registration, you have to submit the payment receipt by email to hoyinpingchess@gmail.com together with the name of the student. The online registration will be automatically voided if you fail to submit the payment receipt within 24 hours of the online registration.

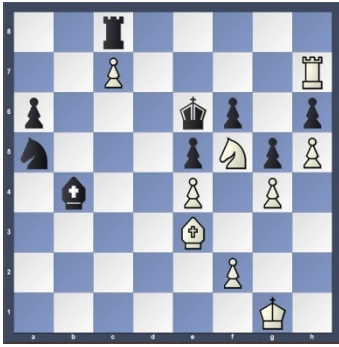
Payment:

By bank transfer - please transfer to HSBC account name “HOYINPINGCHESS”,

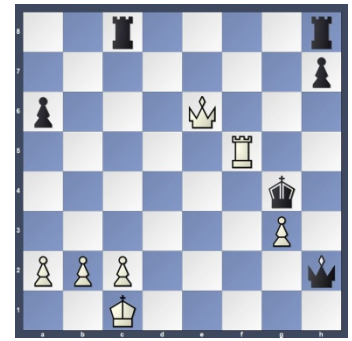
account no. 801 571498 838 (conventional cheque is not accepted). **By FPS**, account “hoyinpingchess@gmail.com”.

Contact:

Ms. HO Yin Ping, Phone: 9215 2682 Email: hoyinpingchess@gmail.com Website: www.hoyinpingchess.com



White moves 1. Bd2 Bxd2 2. Re7 mates
Or 1. Bd2 Bc5 2. Bxa5 Win a Knight



White moves 1. Qe4+ Kh3 2. Rh5 mates

Aim of this Chess course is to experience:

(1) Out of the box thinking, (2) Creativity, (3) SWOT assess strengths and weakness, opportunities and threats, (4) Concentration depths, (5) Checkmate focus, (6) Sportsmanship as an essential component to develop growing minds, whether a game is won, lost, or draw.

Mind sport:

Every chess master was once a beginner. Outrageous chess moves and unexpected tactics decide who is the winner. Try to play a beautiful game worthy of a brilliancy prize. Chess is a mind sport that is played by millions of people worldwide. One doesn't have to play well, it's enough to play better than your opponent.

Learn:

Back Rank Mate, Magnificent 7th Rank, Mate the Fleeing King, Diagonal Mate with Queen and Bishop, Mate with Knight and Queen against the Fianchetto Position. Know the basic chess rules, simple strategy & tactics, Opening, Middle Game and End Game.

LESSONS are open to:

Beginners, intermediate, advanced, and students who participated in open tournaments.

Benefits to students:

(1) Logical thinking is strengthened. (2) Analyse and visualize in a deeper way. (3) Develop a mind that thinks in terms of strategy and tactics. (4) Speed of thinking is increased. (5) Winning is important but good sportsmanship is vital to character development.

Tournament opportunities

Student can participate in local tournaments. Ms HO is Chairman and Tournament Director of the Hong Kong Juniors Chess Club (www.hkjuniorchess.org), which organizes 3 junior events each year. Students who want to play in International Tournaments, may ask her for advice.

Terms & Conditions

- * Students will not be accepted into the class until the registration fee has been paid.
- * Fees are due immediately and payable on registration. Registration without full payment is considered unsuccessful.
- * All fees are non-refundable and no credit offered for withdrawals once students are accepted into the class.
- * We reserve the right to change venue & time without prior notice.
- * Lessons will finish on time. Please pick up your child promptly.
- * No refunds or make up classes will be provided should lessons be canceled because of inclement weather, school closures or other Department of Education / Government directives.
- * No refunds or make up classes are offered should students be unable to attend a scheduled class except for mandatory medical quarantine.